

Idea Development

Name: _____

1 **Generate ideas**

maximum of 50%

Number of **words** → _____ × 1% = _____%

Number of **simple** sketches → _____ × 3% = _____%

2 **Select the best and join together ideas**

Circle the **best** ideas circled = ☐ 5%

Link into **groups** of ideas linked = ☐ 5%

3 **Print reference images**

_____ images × 5% = _____%

maximum of 10 images

4 **Rough copy**

_____ drawing × 25% = _____%

great quality or better

Total = _____%

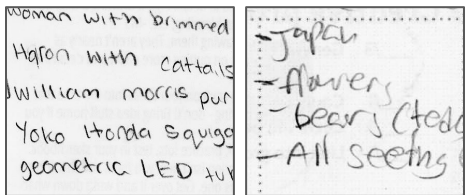
NOTE: If you simply copy a picture from the internet, your mark drops to 25%.

Generate ideas!

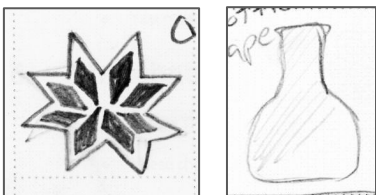
Use lists, a web map, or simple drawings to come up with a LOT of ideas! If you already have an idea in mind, choose that as your central theme and expand upon it. Let your ideas wander - one idea leads to another. Drawings can be details of source images, different viewpoints, textures, technical experiments, etc.

Adding up points for ideas:

Number of **words**
→ ____ × 1% = ____%



Number of **sketches**
→ ____ × 3% = ____%



Select the best

Draw circles or squares around your best ideas

☐ *You have selected the best 3-7 ideas = 5%*

Link the best into groups

Draw dashed or coloured lines to link your best ideas into groups that could work well together

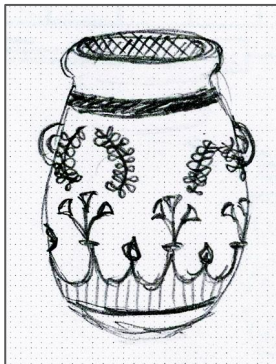
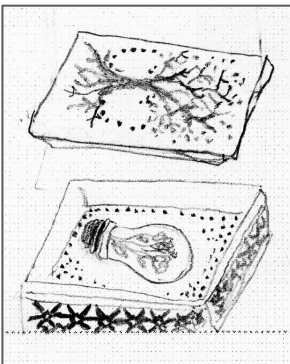
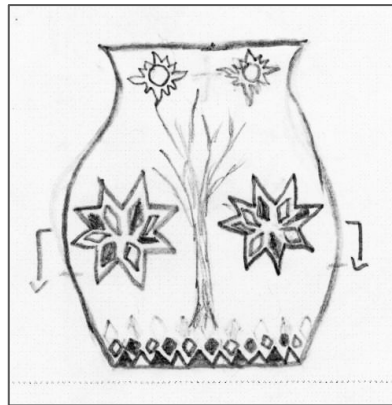
☐ *You have joined the best ideas with lines = 5%*

Print references

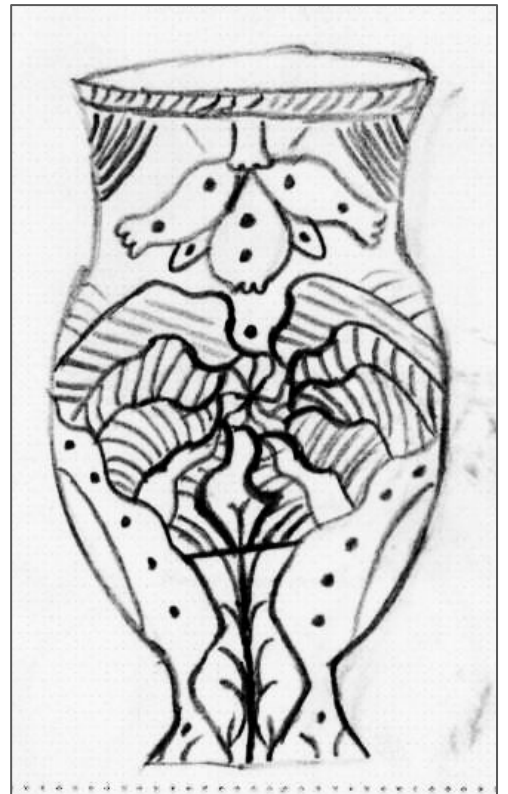
Number of reference photos → ____ × 5% = ____%

- Print **SIX** reference images so you can accurately observe the challenging parts of your artwork. Taking your own and using own photographs is preferred, but image searches are also fine.
- **Do not simply copy a picture that you find.** The idea is to edit and combine source images to create your own artwork. If you simply copy a picture, you are plagiarizing and will earn a zero for your idea generation and any criteria involving creativity in your final artwork.
- Up to half of your pictures may be of drawings, paintings, or other artworks of others to use as inspiration. The other images must be realistic photographs.
- You must hand in the **printed** copy of the images to earn the marks.

Examples of ROUGH drawings



Rough drawing → up to 25% = ____%



Rough drawing

- Take the best ideas from your thumbnails and combine them into an improved rough copy.
- Use this to work out the bugs and improve your skills before you start the real thing.
- If you are using colour, use paint or coloured pencil to show your colour scheme.
- Draw in a frame to show the outer edges of your artwork.
- ***Remember to choose a non-central composition.***